

Open Strings On The Violin

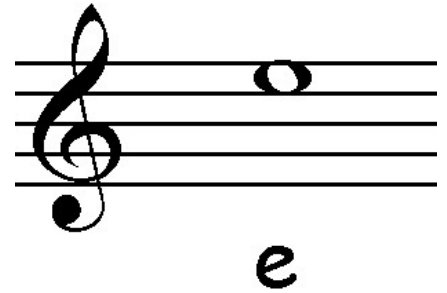
There are four strings on the violin: G, D, A and E.

You can remember this with the phrase Greedy Dogs Always Eat.

The open strings are drawn in **spaces** on the stave.

E is the highest-sounding, thinnest string.

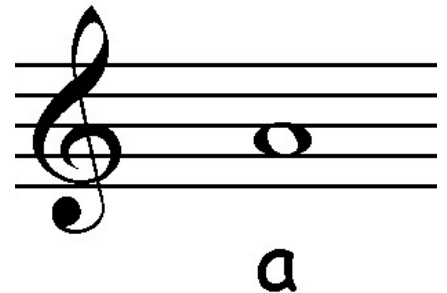
It's drawn in the top space.



A is the second-highest string.

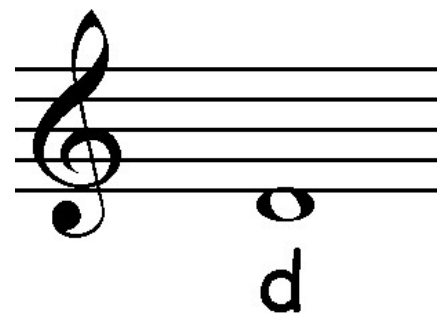
It's next to the E string.

It's drawn in the second space up.



The next string is **D**. It's the second-lowest string.

It's drawn in the space just below the stave.



G is the lowest-sounding, thickest string.

It's drawn in the space two **ledger lines** below the stave.

