

# 1st finger notes on the violin

To play a note with your first finger (index finger), use your fingertip to press down hard on the string, then use your bow to play it (just like you would to play an open string).

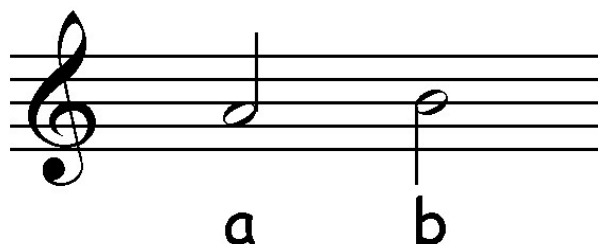
However, you need to press down in exactly the right place to play the note in **tune** - this means listening carefully and doing lots of practise so that your finger learns where to go!

As a rough guide, you need to press down about 2-3cm from the end of the string closest to the peg box. It should sound like the note is **one step higher** than the open string.

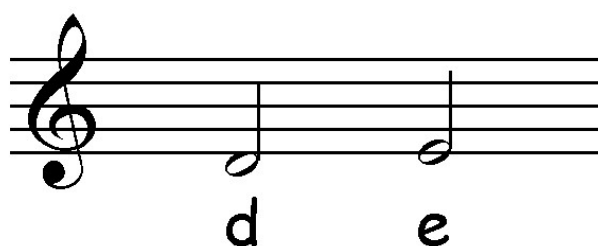
On the **E** string, this new note is called **F#** (F sharp).



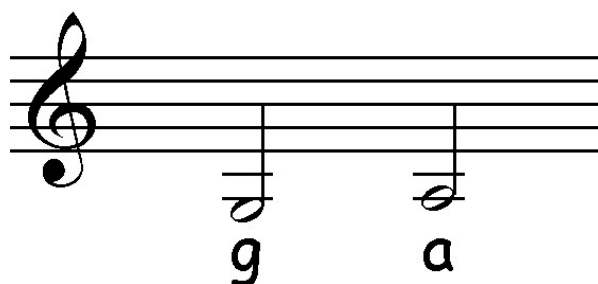
On the **A** string, this new note is called **B**.



On the **D** string, this new note is called **E**.



On the **G** string, this new note is called **A**.



You might have noticed that there are now two notes called **A** and two notes called **E**. Look carefully at the way they are drawn so that you can tell them apart. You could also think of them as high E and low E, for now.