



Note Names On The Piano:



First Notes In The Left Hand

Notes for the **left hand** are usually drawn in the **bass clef**.

Try drawing over these bass clefs, then draw some of your own too.

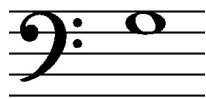
Start here, then add the dots last. You don't need to colour in the wide parts, just follow the shape.



Here are the first five notes you learn to play with the left hand. Look carefully at whether they are drawn *on a line* (like A) or *in a space* (like G):



f



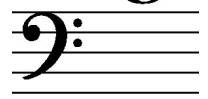
g



a



b



c

1. Write the letter names below the notes. The first one has been done for you.



c



2. Can you draw these notes?



b

f

a

g

c

b

g

c



a

g

c

f

b

g

a

f