



Note Names On The Piano:



First Notes In The Right Hand

Notes for the **right hand** are usually drawn in the **treble clef**.

Try drawing over these treble clefs, then draw some of your own too.

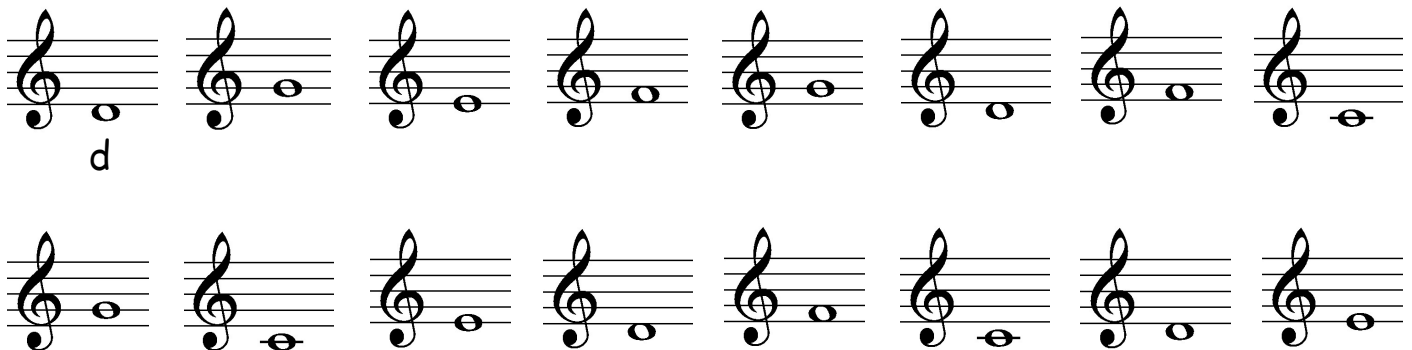
Start here and draw the whole thing in one long curly line. You don't need to colour in the wide parts, just follow the shape.



Here are the first five notes you learn to play with the right hand. Look carefully at whether they are drawn *on a line* (like E) or *in a space* (like F):



1. Write the letter names below the notes. The first one has been done for you.



2. Can you draw these notes?

