

Ukulele: open strings

There are four strings on the ukulele: **G C E A**

We don't normally play melody notes on the first string (**G**). It's the second-highest sounding string on the ukulele, after the **A** string.

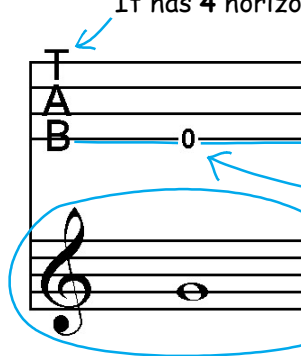
The **C** string is the second string on the ukulele, but it sounds the lowest.

The third string, **E**, sounds a little higher than **C**.

The fourth string, **A**, is the highest-sounding string.

TAB notation is labelled with the word 'TAB'. Nice and easy.
It has 4 horizontal lines, which represent the four strings.

G string



In TAB, all **G** string notes will be drawn on this line.

'0' is the number of the fret you press to play this note. This number will be zero for all the open strings, because you don't need to press a finger on a fret to play these notes.

This is how the note **G** is written in **standard musical notation**, which has 5 horizontal lines. This is called a **stave**. These lines don't have anything to do with ukulele strings - just think of them as a ladder with higher-sounding notes at the top and lower-sounding notes at the bottom.

C string



In TAB, all **C** string notes will be drawn on this line.

Here's **C** in standard musical notation. It's the lowest-sounding note on the ukulele so it's drawn the lowest on the stave.

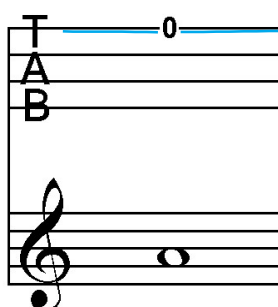
E string



In TAB, all **E** string notes will be drawn on this line.

Here's **E** in standard musical notation.

A string



In TAB, all **A** string notes will be drawn on this line.

Here's **A** in standard musical notation. It's the highest-sounding note on the ukulele, so of the four ukulele strings, it's drawn the highest on the stave.